

Estates

# Browne

**B**  
**E**

SALES & LETTINGS



## Princes Plain

Bromley, BR2 8LE

*Three bedroom semi-detached home in need of modernisation}*



## 52 Princes Plain

Price £425,000

CHAIN FREE. Concrete built house.

In need of complete modernisation is this spacious three bedroom semi-detached home backing onto fields

Downstairs there are two good sized reception rooms and an 11'6 kitchen.

Upstairs are two double bedrooms, a third single bedroom, a bathroom and separate wc.

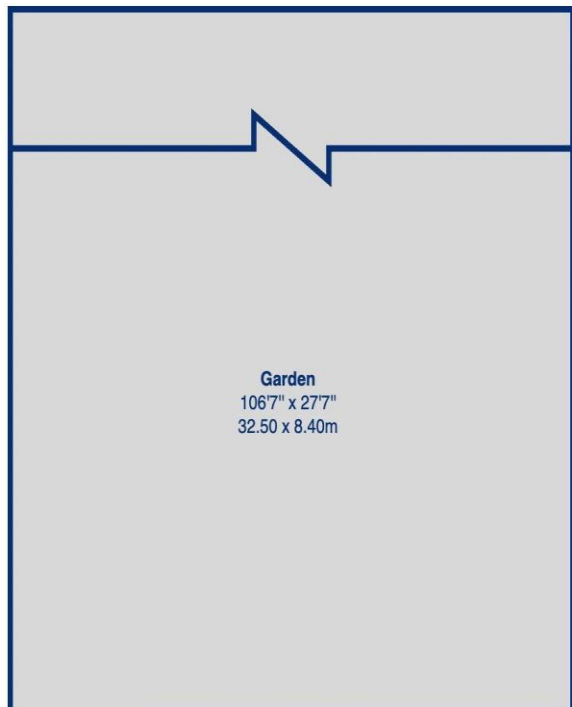
To the rear there is a good sized garden and the property benefits from parking to the front. Keys with us.

- 3 bedrooms
- 2 reception rooms
- Bathroom with separate wc
- Gas central heating
- Backing fields

- Parking to front
- Chain Free

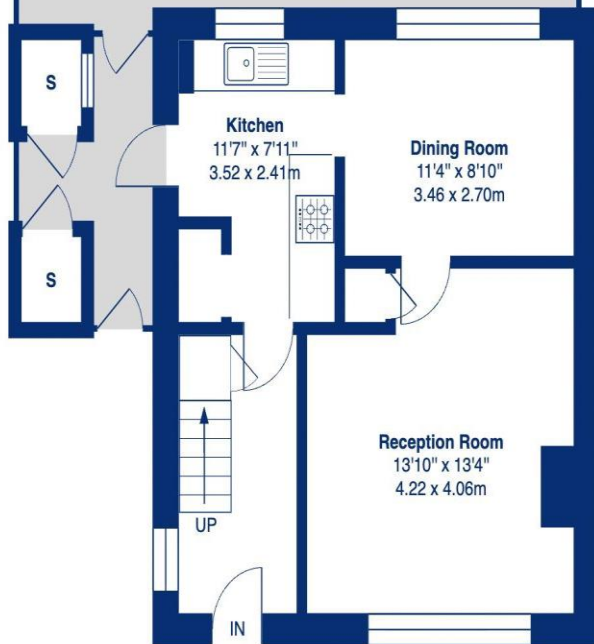




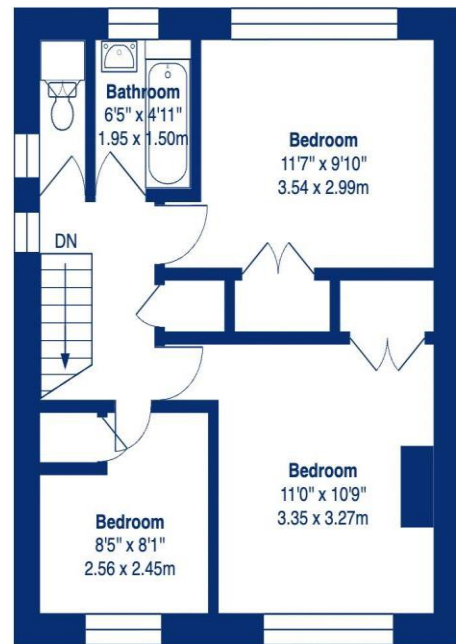


## Princes Plain, BR2

Approximate Gross Internal Area =  
908 sq ft / 84.4 sq m



Ground Floor



First Floor

This plan is for layout guidance only and not drawn to scale unless stated. Window and door openings are approximate. Whilst every care is taken in the preparation of this plan, we would advise interested parties to check all dimensions, shapes and compass bearings prior to making any decisions reliant upon them. No liability is accepted for any errors.  
By Prime Square Photography / Copyright 2026

### Disclaimer

We have not tested any services, systems or appliances at this property. We strongly recommend that all the information which we provide is verified by yourselves on inspection, and by your Surveyor and Conveyancer.

B2139 Ravensworth 01670 713330



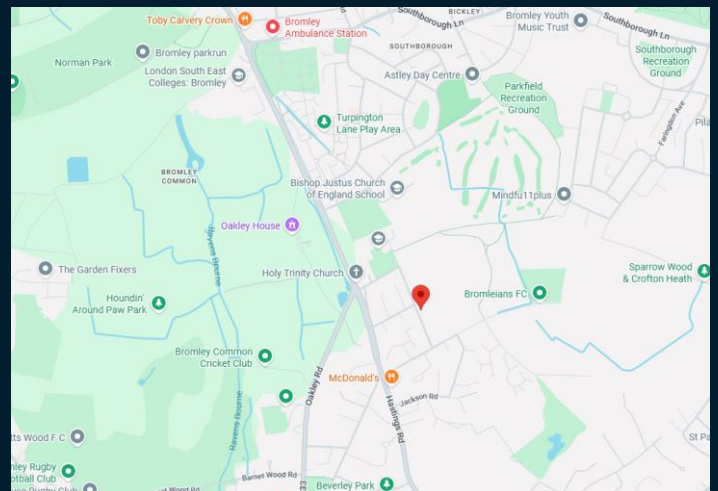
## Additional Information

**Council Tax Band: A**

**EPC Rating: TBC**

**Location: Bromley**

**Viewing: Via Browne Estates**



197 Widmore Road, Bromley, Kent BR1 2RG

Email: [sales@browne-estates.co.uk](mailto:sales@browne-estates.co.uk)

Tel: 020 8466 9101

[www.browne-estates.co.uk](http://www.browne-estates.co.uk)